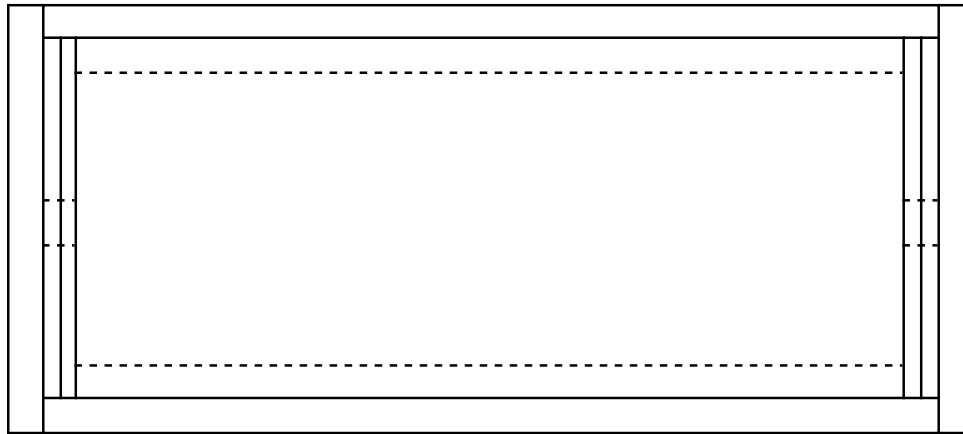


scale - 1" = 4"

5 Frame Mating Nuc

(For standard 9-1/8" frame)

Drawn by Gary S. Reuter
University of Minnesota
Dept. of Entomology
10-12-02



Notes

1. All 3/4" pine except bottom is 1/2" plywood. Legs are treated.
2. handles have 10 degree bevel.

○ 1" d holes. vent hole is screened.

Material List

#2 pine

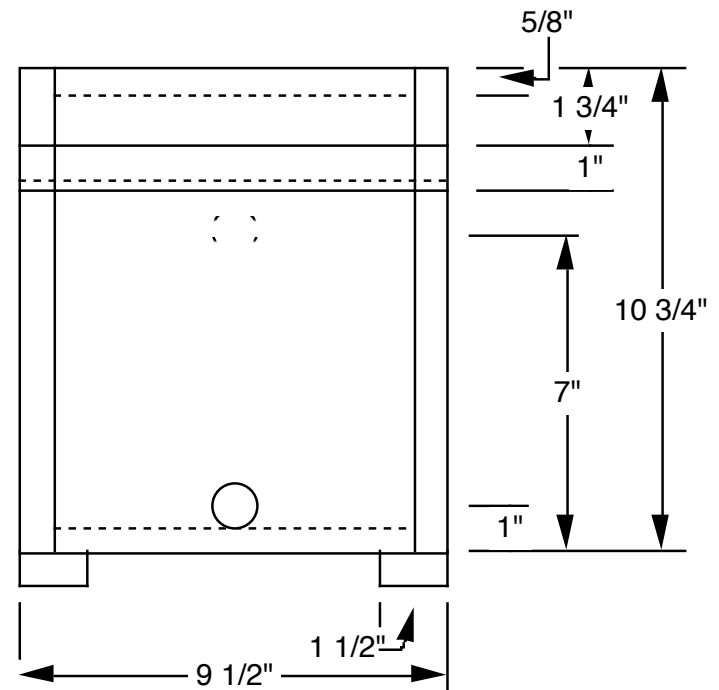
- 2 - 3/4 x 10-3/4 x 19-7/8
- 2 - 3/4 x 8 x 10-3/4
- 2 - 3/4 x 1 x 9-1/2

treated lumber

- 2 - 3/4 x 1-1/2 x 19-7/8

plywood

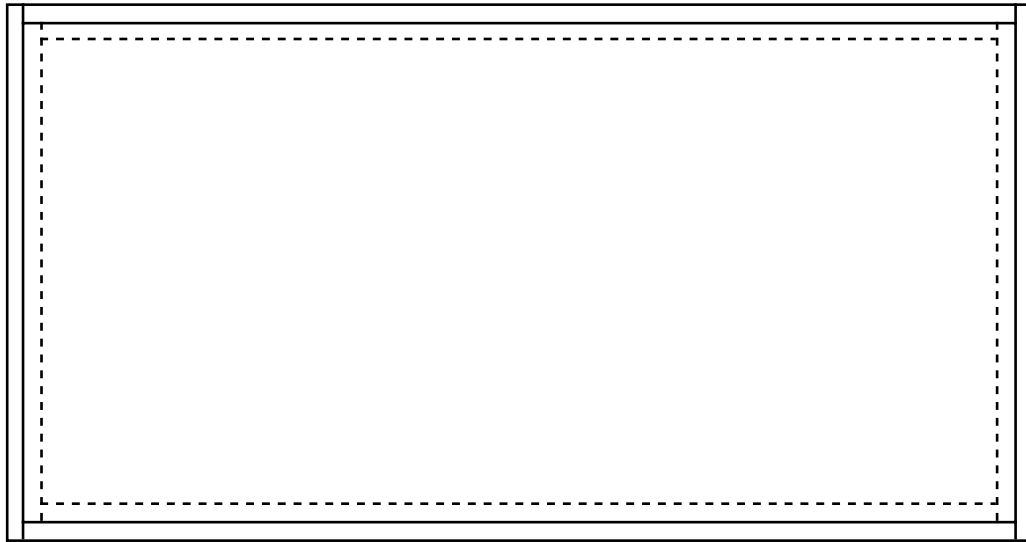
- 1 - 1/2 x 8 x 18-3/8



scale - 1" = 4"

5 Frame Mating Nuc Cover

Drawn by Gary S. Reuter
University of Minnesota
Dept. of Entomology
10-12-02

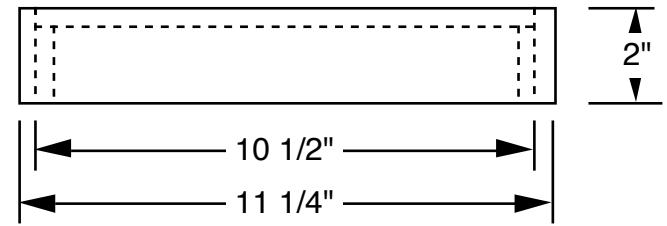
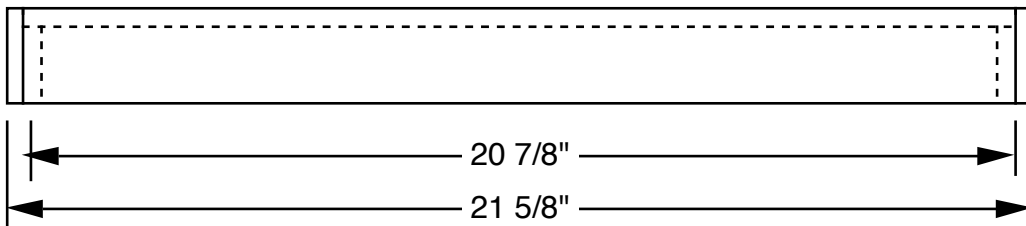


Notes

1. All 3/4" pine except Top is 3/8" plywood.
2. Top and 1/2" down all sides is covered with aluminum flashing. (not shown)
3. Rabbets are 3/8" x 3/8"
4. Top plywood sets into rabbets
5. Typical corner joint



6. Optional hardwood inner cover
1/8 x 9-1/2 x 19-3/4"



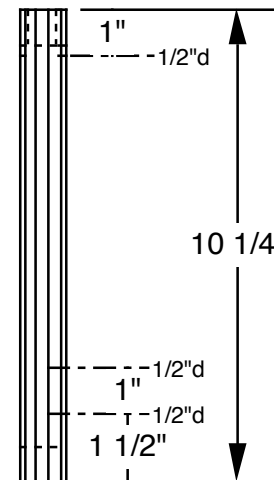
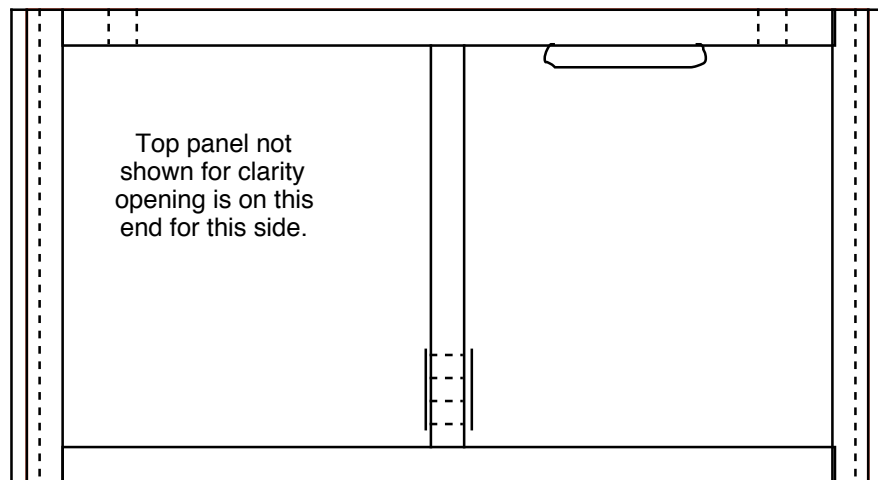
Material List	#2 pine	plywood	hardwood
	2 - 3/4 x 2 x 11-1/4	1 - 3/8 x 10-1/2 x 20-7/8	1 - 1/8 x 9-1/2 x 19-3/4
	2 - 3/4 x 2 x 20-7/8		(optional)

scale - 1" = 4"

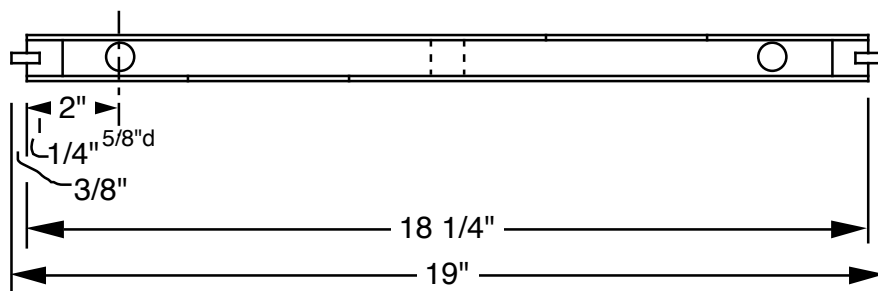
Drawn by Gary S. Reuter
University of Minnesota
Dept. of Entomology
10-12-02

Feeder for 5 Frame Mating Nuc

Assemble with waterproof glue and
coat inside with paraffin wax



Material List	
#2 pine	
2 -	3/4 x 3/4 x 10-1/4
1 -	3/4 x 3/4 x 8-3/4
2 -	3/4 x 3/4 x 16-3/4
plywood or hardboard	
2 -	1/4 x 5/8 x 10-1/4
2 -	1/8 x 10-1/4 x 18-1/4



Frame is 3/4" x 3/4" pine
side panels are 1/8" plywood or masonite
end runners are 1/4" plywood or masonite

This feeder will go in the Modified Frame Mating Nuc as a divider. Note: The holes in the center divider of the feeder with screen so the syrup can go from one side to the other but the bees can not. This allows you to feed the entire feeder from one side and if there are bees only on one side they can empty the entire feeder.

Note an alternative method is to offset the slot on the box then make the end panels 3/8" bigger so they overlap instead of putting the separate runner on the side.