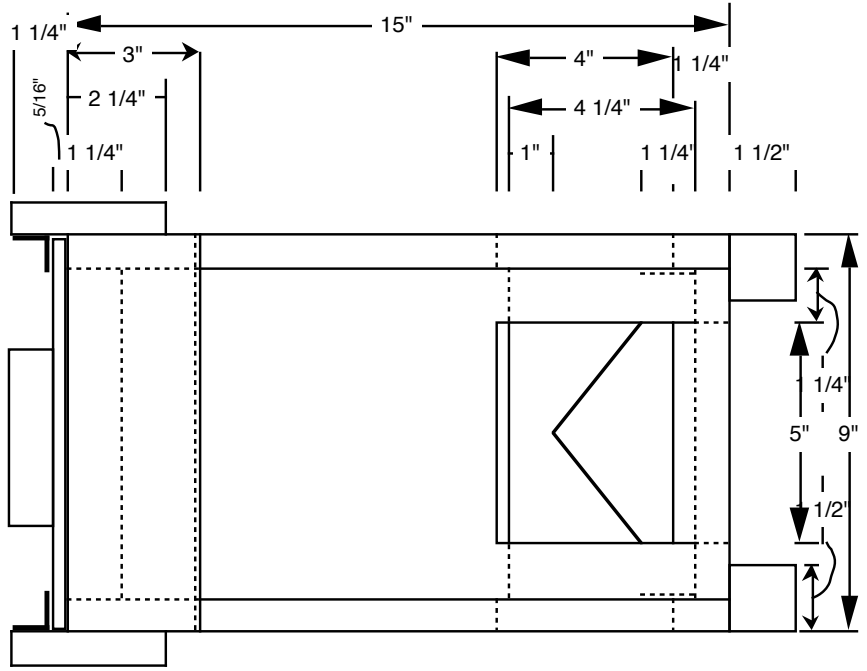
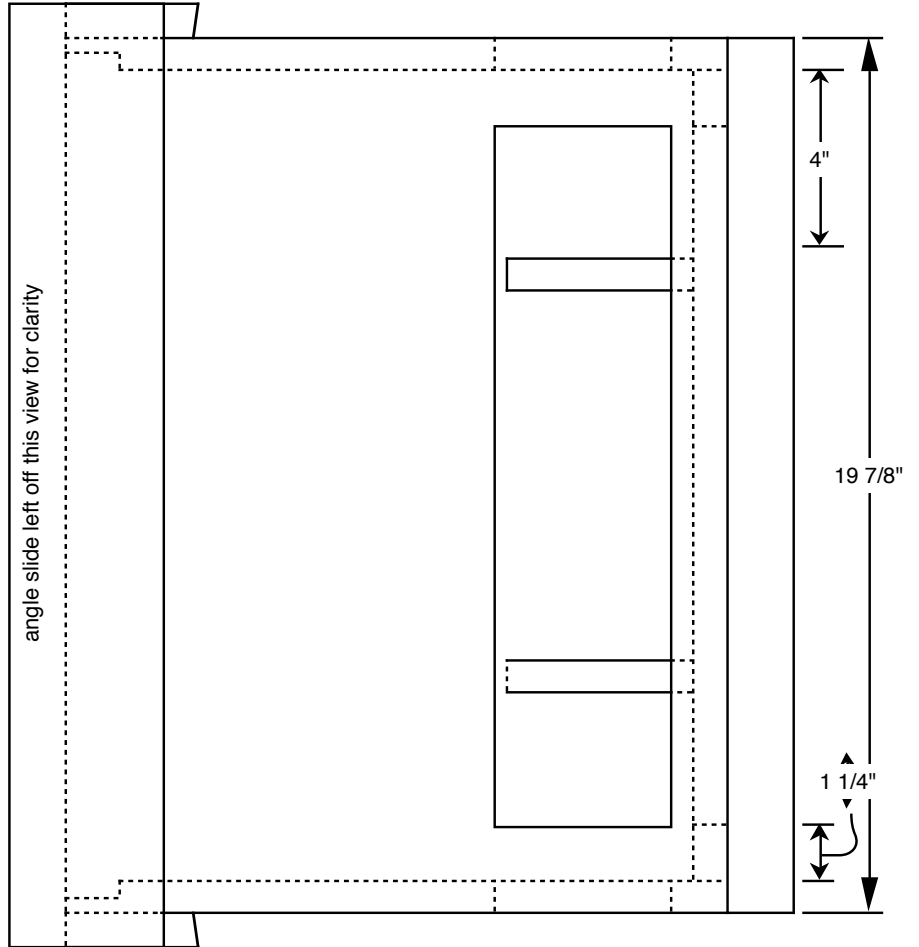
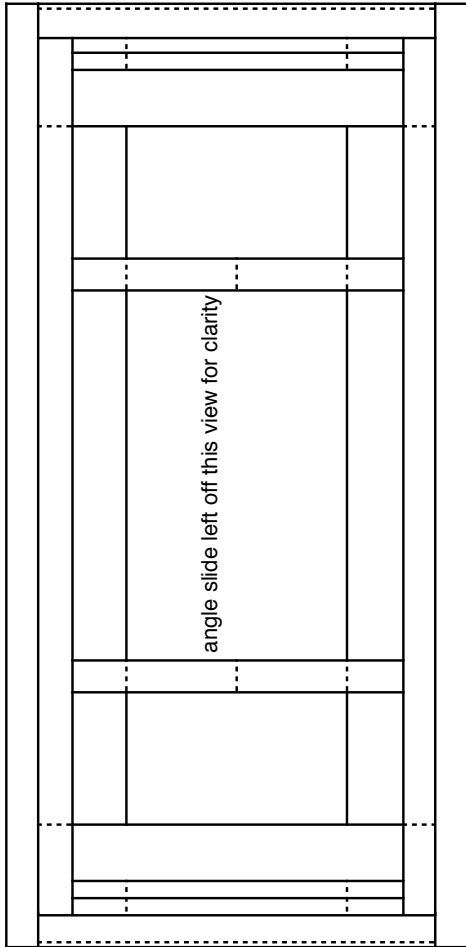


Swarm Box 1 of 2

Drawn by Gary S. Reuter
 University of Minnesota
 Dept. of Entomology
 07-28-06

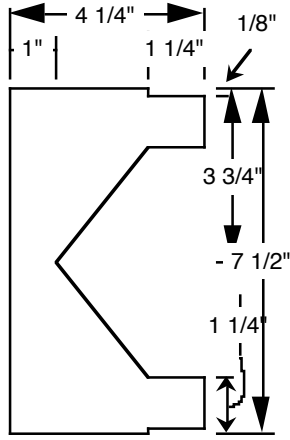
Openings on the sides, ends &
 bottom are covered with 8x8
 hardware cloth on the inside.



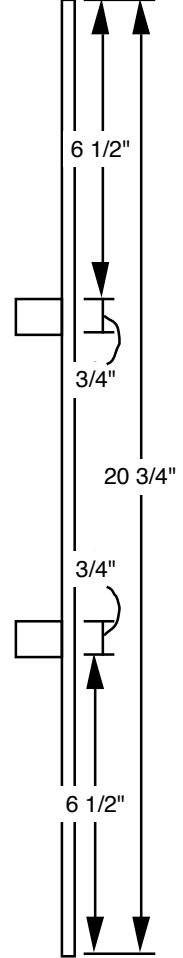
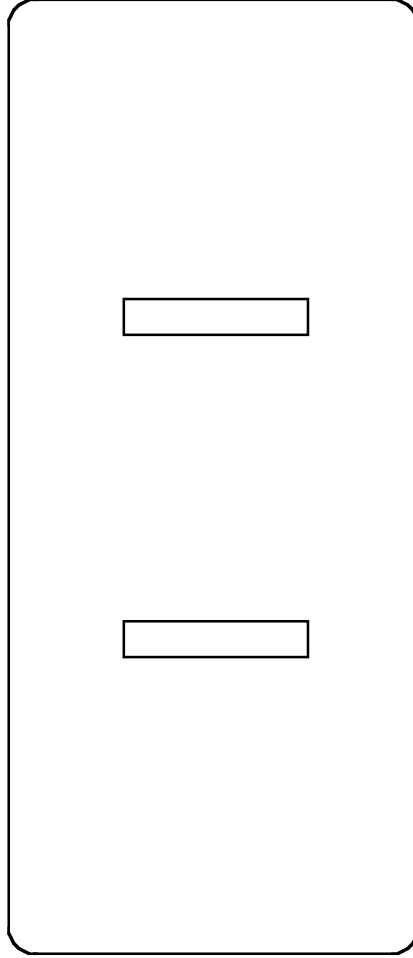
Swarm Box 2 of 2



Frame support detail
 3/4" pine or plywood



Cover



Material List	
3/4" #2 Pine or plywood	
2 - 7-1/2 x 15 = ends	
2 - 15 x 19-7/8 = sides	
2 - 1-1/4 x 15-7/8 = bottom	
2 - 1-1/4 x 7-1/2 = bottom	
2 - 3-1/2 x 21-3/8 = bottom	
2 - 3 x 9 = handles	
2 - 1 x 3 = cover handle	
2 - 4-1/4 x 7-1/2 = frame supports	
1-1/2 x 1-1/2 FIR	
2 - 19-7/8 = legs	
Tempered Hardboard	
1 - 1/4" x 8-7/8 x 20-3/4 = cover	
Hardware Cloth 8x8	
1 - 18 x 18-1/2 = bottom & sides	
2 - 5-1/2 x 7 = ends	
Misc.	
2 - 3/4 x 3/4 x 20" angle metal	

