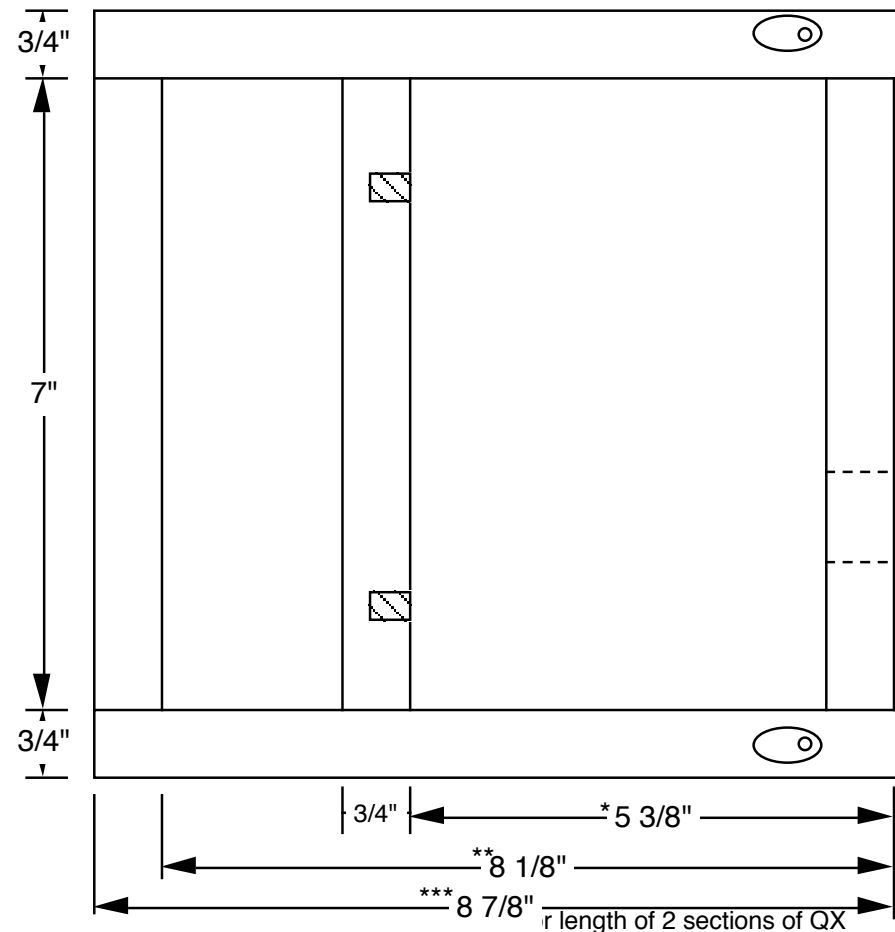
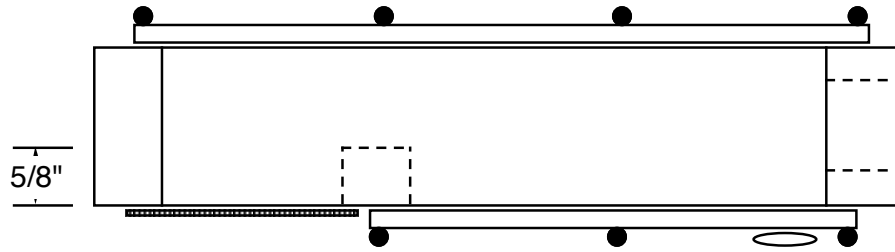

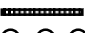
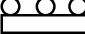



scale -1"=2"

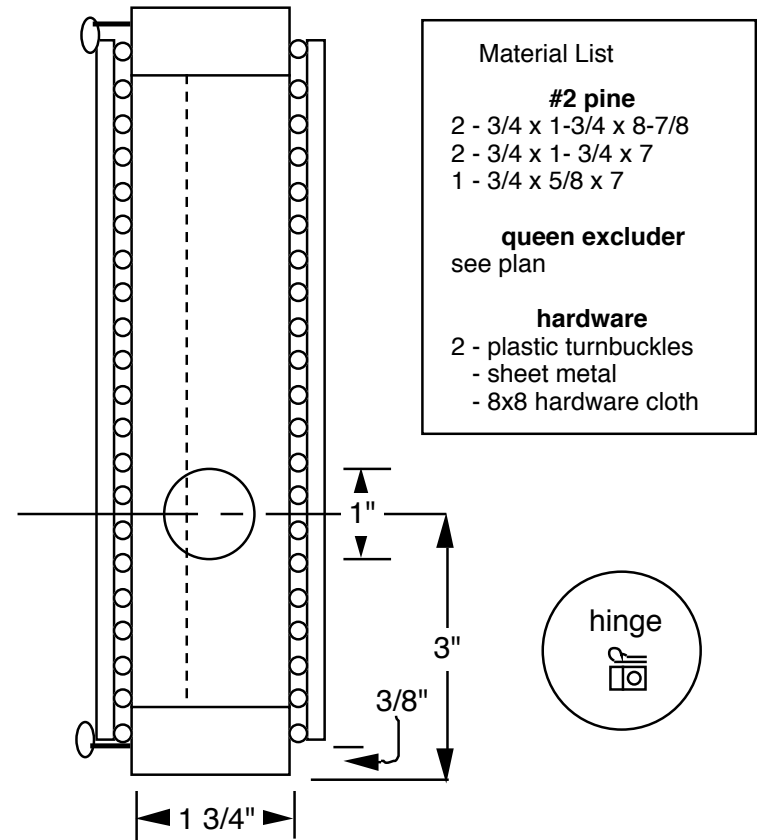
Drone Cage

Drawn by Gary S. Reuter
University of Minnesota
Dept. of Entomology
10-12-02



-  Hinge fashioned from sheet metal
-  8x8 hardware cloth
-  Queen Excluder
-  Turnbuckle

For clarity the queen excluder and screen are not shown on the top view and the screen is not shown on the end view.



- Material List**

#2 pine

 - 2 - 3/4 x 1-3/4 x 8-7/8
 - 2 - 3/4 x 1- 3/4 x 7
 - 1 - 3/4 x 5/8 x 7

queen excluder
see plan

hardware

 - 2 - plastic turnbuckles
 - sheet metal
 - 8x8 hardware cloth

Note that these dimensions may vary depending on the queen excluder you are using.

** or length of 3 sections of QX
*** or length of 3 sections of QX plus 3/4"