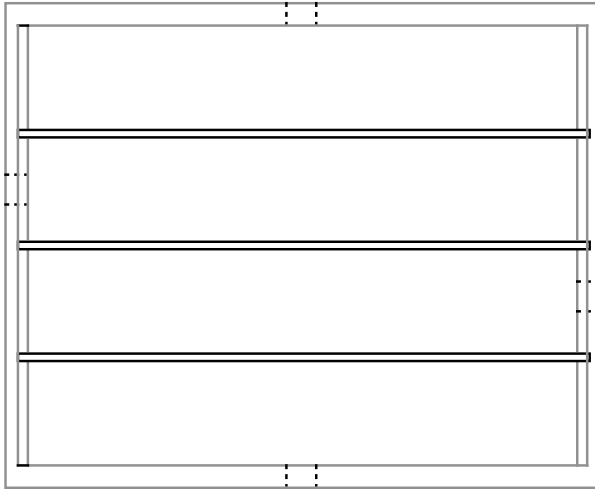


scale - 1" = 6"

Hive Body Mating Nuc

Note: standard hive body with modifications shown

Drawn by Gary S. Reuter
University of Minnesota
Dept. of Entomology
12-27-01

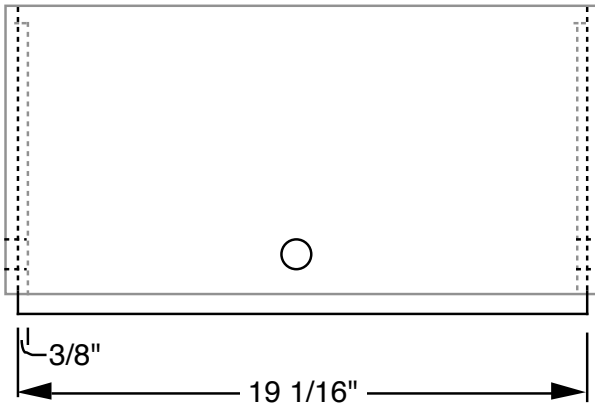


Dividers are 1/4" plywood or masonite.

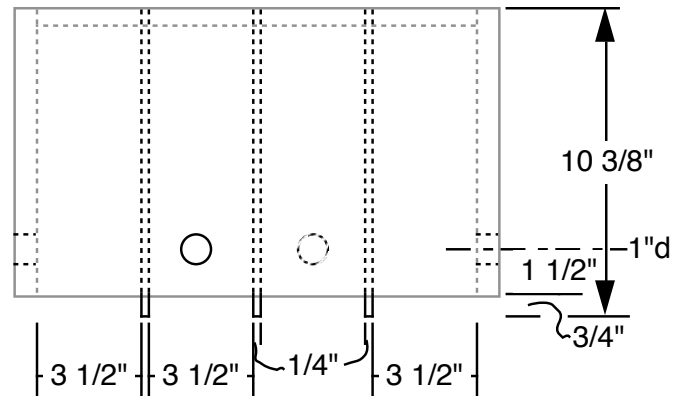
Four inner covers should be made of plastic window shade, 1/8" plywood or masonite, canvas or unbleached muslin etc. One must be able to open only one section at a time.

Material List

plywood or hardboard
1 - 1/4 x 9-1/16 x 10-3/8
standard deep hive body



The bottom board entrance should be sealed with a solid entrance reducer or entrance reducer wrapped in tin foil.



Be sure the dividers go all the way to the bottom board .