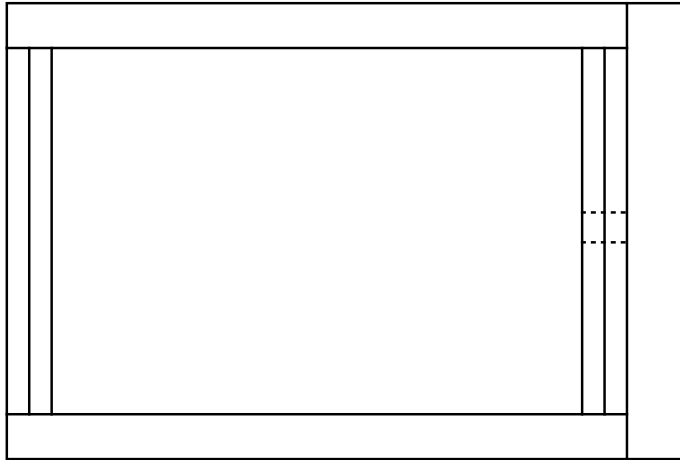


scale - 1" = 3"

4 Frame Mini Mating Nuc

Drawn by Gary S. Reuter
University of Minnesota
Dept. of Entomology
12-07-01



Designed to hold 6 1/4" frames
1/2 normal length

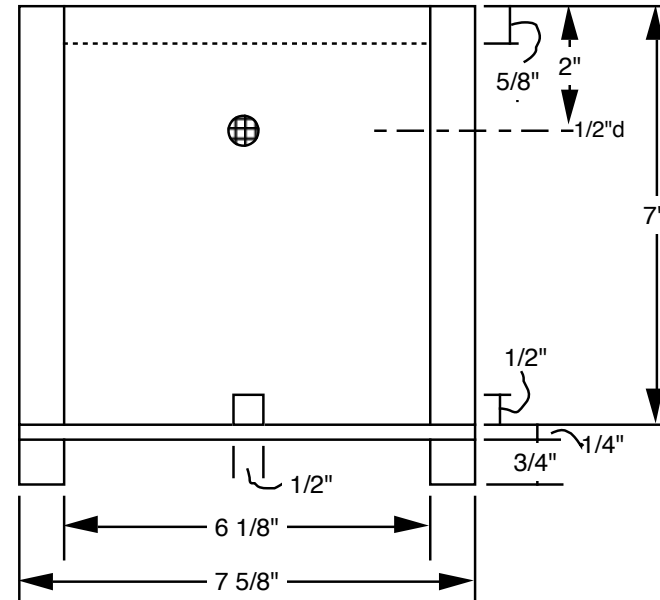
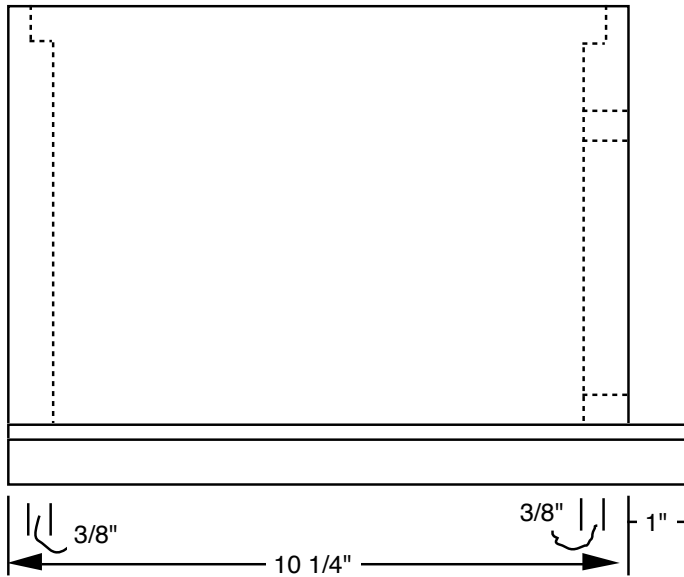
Material List

#2 pine

- 2 - 3/4 x 6-1/8 x 7
- 2 - 3/4 x 7 x 10-1/4
- 2 - 3/4 x 3/4 x 11-1/4

Plywood

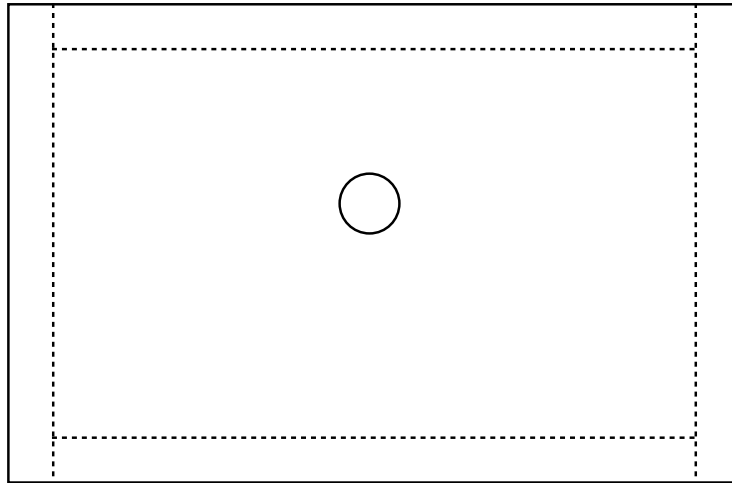
- 1 - 1/4 x 7- 5/8 x 11-1/4



scale - 1" = 3"

Mini Mating Nuc Cover

Drawn by Gary S. Reuter
University of Minnesota
Dept. of Entomology
12-07-01



()=size for 4 frame
4 frame does not
require feeder hole

Material List

#2 pine

2 - 3/4 x 3/4 x 10-3/4

2 - 3/4 x 3/4 x 8 (9-12)

plywood

1 - 1/4 x 12-1/4 x 8 (9-1/2)

